



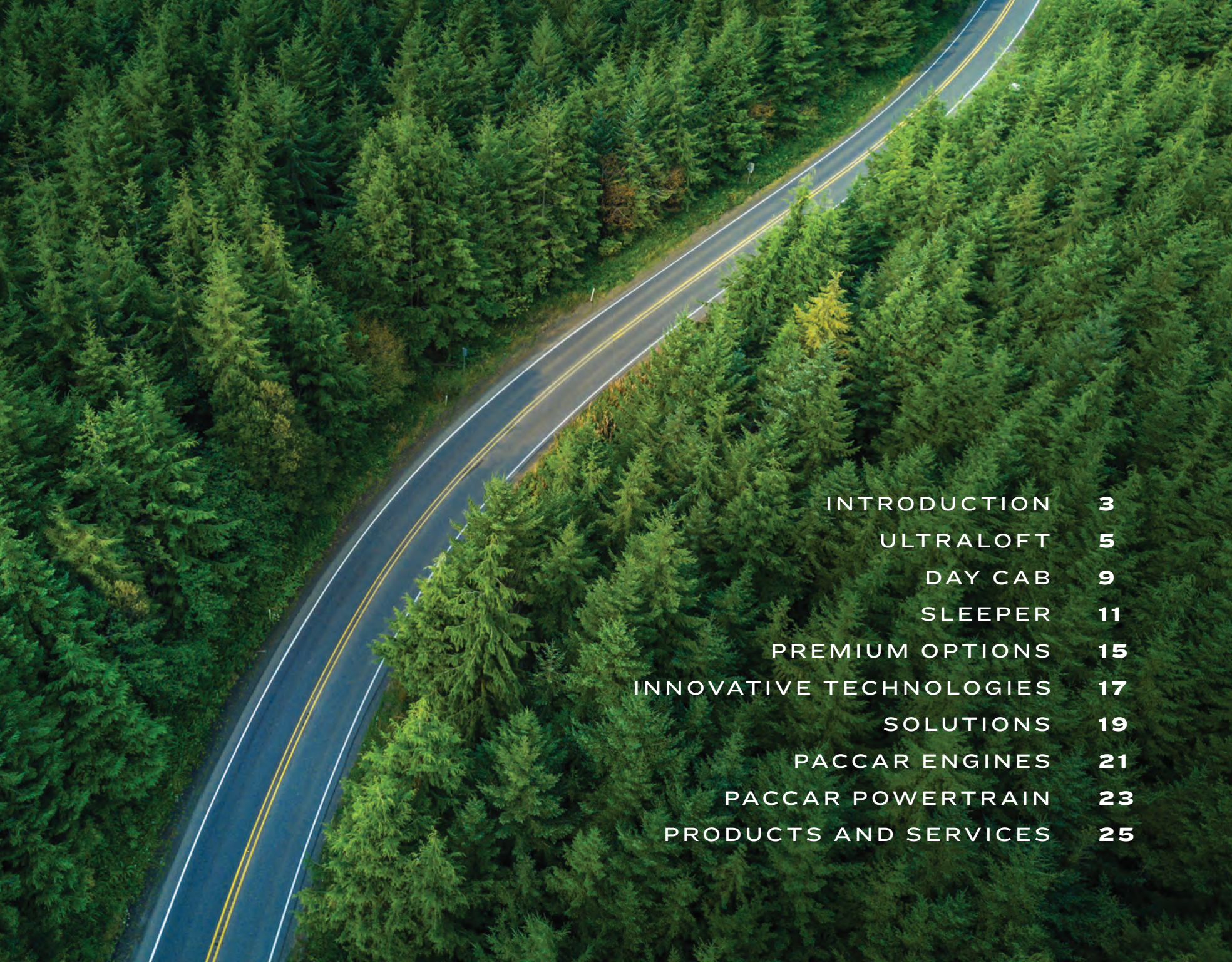
MODEL

579

Driven to
be the best.



Peterbilt

An aerial photograph of a two-lane asphalt road with double yellow lines, curving through a dense, lush green forest of evergreen trees. The road starts from the bottom left and curves towards the top right. The text of the table of contents is overlaid on the right side of the image.

INTRODUCTION	3
ULTRALOFT	5
DAY CAB	9
SLEEPER	11
PREMIUM OPTIONS	15
INNOVATIVE TECHNOLOGIES	17
SOLUTIONS	19
PACCAR ENGINES	21
PACCAR POWERTRAIN	23
PRODUCTS AND SERVICES	25

MODEL
579

**PROVEN DURABILITY.
SUPERIOR PERFORMANCE.
PETERBILT QUALITY.**



Crafted from a rich history of proven quality and innovation, the Peterbilt Model 579 raised the bar for fuel-efficiency, durability and safety, as well as driver comfort and productivity. That same passion for unrivaled performance is now available in our most fuel-efficient truck ever.

The Model 579 is extremely versatile, available in a day cab configuration as well as five sleeper configurations – UltraLoft, 80", 72", 58" and 44". With additional configurations like the EPIQ aero package and the distinctive Bright Finish Package, Peterbilt's Model 579 can be spec'd for virtually any application.



SLEEK NEW STYLE FOR A SMOOTHER RIDE.

The 80" UltraLoft high-roof integral sleeper adds to the range of customizability of the Model 579. This integrated sleeper achieves the goals of maintaining the bold, iconic Peterbilt look, while improving aerodynamics and weight savings.

The UltraLoft sleeper not only looks sleek, but it provides a 200-lb. weight saving and up to a 2% aerodynamic enhancement over Peterbilt's discrete sleepers, equating up to a 1% fuel efficiency improvement to your bottom line.

The UltraLoft is standard with a driver's side window and a flush baggage door, with an optional full-height flush sleeper-access door available, for improved aerodynamics. Large upper windows with a tilt feature are included, allowing ambient light to fill the sleeper.







DELIVERING A NEW LEVEL OF COMFORT.

The Model 579 UltraLoft offers the ultimate environment for driving, living and working. The high-quality interior is created from soft-touch materials and features a superb fit and finish for an outstanding driver experience. Headroom is exceptional, with an interior height of over eight feet.

The Model 579 UltraLoft interior offers the largest storage capacity available in the industry, with more than 70 cubic feet of space with multiple compartments, a large wardrobe closet and several cubbies. A cleverly designed fold-away ladder provides ease of access to the upper bunk and disappears when not in use.

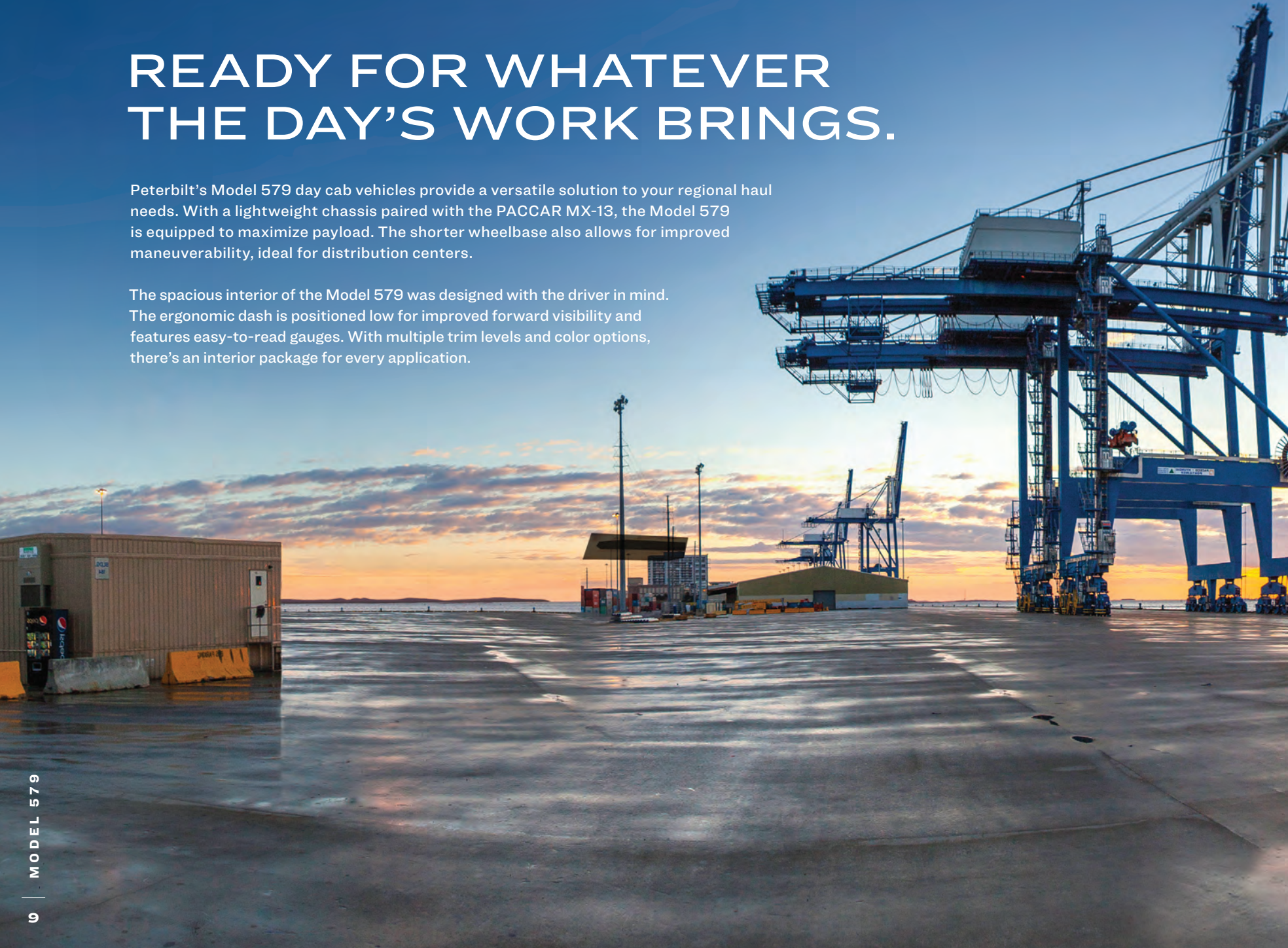
The interior also features the comforts of home, such as space for appliances, entertainment options, power outlets and other special touches that make the Model 579 UltraLoft the preferred choice of drivers.



READY FOR WHATEVER THE DAY'S WORK BRINGS.

Peterbilt's Model 579 day cab vehicles provide a versatile solution to your regional haul needs. With a lightweight chassis paired with the PACCAR MX-13, the Model 579 is equipped to maximize payload. The shorter wheelbase also allows for improved maneuverability, ideal for distribution centers.

The spacious interior of the Model 579 was designed with the driver in mind. The ergonomic dash is positioned low for improved forward visibility and features easy-to-read gauges. With multiple trim levels and color options, there's an interior package for every application.







A CORNER OFFICE FOR THE ROAD.

Providing the comforts of home, the spacious Model 579 discrete sleepers are unmistakably Peterbilt. Complete with a functional business area, the sleeper doubles as a comfortable and convenient office. Features include new sound abatement technology that minimizes outside noise and a climate control system for excellent heating, cooling and air circulation, as well as the industry's widest use of LED lighting.

1 A flat-panel TV mount accommodates flat-screen TVs on a convenient swivel.

2 Easy rollout drawer is sized perfectly to store 12-oz. beverages upright.

3 Retractable desktop provides a handy work surface and storage space for a laptop computer and other personal items.

4 Model 579 discrete sleepers are available in 80", 72", 58" and 44" lengths.



ON THE ROAD AND ON THE JOB.

By designing the Model 579 cab around the driver, we've created an environment that drivers want to be in. Under the dash, there is plenty of legroom and a fully adjustable steering column. For visibility, a low dash brow doesn't sacrifice line of sight. All this comes together in a spacious and ergonomic cab interior designed with the driver in mind and everything within reach.

- 1** The Model 579 driver display features large, easy-to-read, operation-critical gauges clustered in a "sweet spot."
- 2** The multi-function steering wheel features convenient access to cruise control and audio controls. Switches are backlit for enhanced nighttime visibility.
- 3** A pull-out tray provides a passenger-side work surface.





PREMIUM OPTIONS



SmartNav®, Peterbilt’s exclusive infotainment system, now includes the PeopleNet App, which provides ELD-ready functionality as well as complete access to the PeopleNet Fleet Management solution. With this latest update, SmartNav maintains its leadership as a top telematics and infotainment solution for Peterbilt customers. Other enhancements to the SmartNav display include the TruckCare® Roadside Assistance app, which provides direct access to Peterbilt’s 24/7 customer support desk. SmartNav keeps its leading functionality. Other features of the SmartNav display include AM/FM/Weather radio, Sirius XM Satellite Radio, vehicle diagnostics, Bluetooth connectivity for hands-free calling and text-to-voice functionality. SmartNav also features a USB port for memory devices and a truck-specific ALK CoPilot system to support navigation.

Peterbilt’s seats with dampening adjustments, suspensions and optional climate control provide a comfortable ride.



SEAT COLORS

	GRAY		TAN	
LEATHER				
VINYL				
CLOTH*				

**Also available in black.*

PLATINUM INTERIOR OPTIONS



INTERIOR COLOR OPTIONS

SADDLE



DARK VINYL

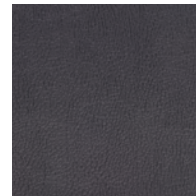


LIGHT VINYL

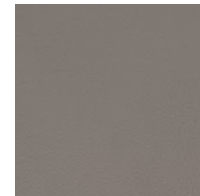


HEADLINER

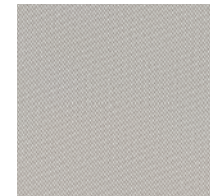
STERLING GRAY



DARK VINYL



LIGHT VINYL



HEADLINER

WOODGRAIN



PREMIUM TECHNICAL GRAIN



INNOVATIVE TECHNOLOGIES

DRIVER PERFORMANCE ASSISTANT

Peterbilt's Driver Performance Assistant (DPA), an in-dash, visual messaging system, improves fuel economy and overall vehicle performance and helps make good driving habits great. DPA provides visual prompts to assist the driver during vehicle operation regarding behaviors such as coasting, braking, HVAC usage, idling and tire inflation – all of which contribute to optimized vehicle performance and fuel economy.



Peterbilt's proprietary SmartAir™ system provides a factory-installed, no-idle climate control solution that delivers maximum sleeper comfort with reduced emissions and lower fuel costs. SmartAir is powered by four, heavy-duty AGM batteries that charge during normal driving conditions. When the engine is off, SmartAir provides quiet, efficient, high-power cooling capacity for up to 10 hours on a single charge. It also features on-board diagnostics, automatic temperature control and a digital LCD display for easy control and battery monitoring. When combined with Auto Start, SmartAir will automatically start the engine to recharge the batteries when it senses the voltage has dropped too low. This will allow operators to use the climate control systems without interruption.



PREDICTIVE CRUISE CONTROL

Predictive cruise control is the latest step in turning innovative technology into fuel savings. Using a GPS satellite locator function and terrain mapping, it knows exactly where the vehicle is and what geographical features are ahead. Predictive cruise anticipates upcoming grades and manipulates the powertrain accordingly. It also knows what's on the other side of the hill and uses the powertrain to maintain the set cruise speed. This can prevent unnecessary acceleration on down grades. Overall, predictive cruise control has shown a 3% improvement in fuel economy.



WINGMAN FUSION

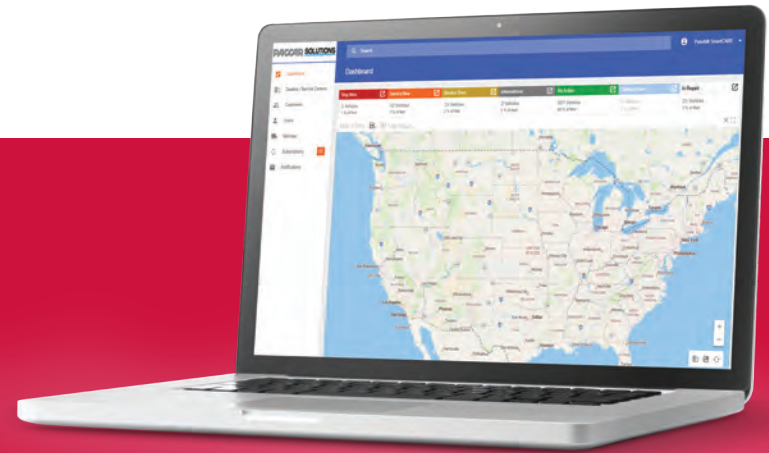
The Model 579 is standard with Bendix® Wingman® Fusion™ – an advanced driver assistance safety system that includes lane departure warning, enhanced collision mitigation and in-lane object identification. The system gathers input from radar, video, multiple sensors and the braking system to create a highly detailed in-cab picture of the vehicle's external operating environment. The integrated communication of safety systems takes driver assistance technology to a new level of performance.

**Simulated display of Bendix® Wingman® Fusion™ information for demonstration purposes only.*

DRIVING UPTIME EVERY DAY.

PACCAR SOLUTIONS

PACCAR Solutions Service Management, the cloud-based service event management platform from Peterbilt, gives you full visibility and control when service is needed. No more paper estimates. No more time wasted on phone calls. With PACCAR Solutions Service Management, all cost estimates, status updates and work approvals are managed fully online through a web portal. The PACCAR Solutions Service Management platform is another uptime solution from Peterbilt.



TRUCKCARE SUPPORT

TruckCare support is available 24 hours a day, 7 days a week by dialing 1-800-4PETERBILT. TruckCare provides Peterbilt dealer assistance anywhere in the United States or Canada. Mobile Service Units are also available to provide service assistance while on the road for fast response and maximum uptime.

SMARTLINQ

Maximize your uptime and take control 24 hours a day, 7 days a week with SmartLINQ®, the on-board remote diagnostics system standard on every Model 579. SmartLINQ monitors more than 300 parameters to ensure the vehicle is operating at maximum efficiency. The system generates real-time in-cab notifications for the driver as well as email notifications that can be sent directly to the fleet manager and your selected Peterbilt dealership. Notifications and enhanced service guidance are also available via the PACCAR Solutions Remote Diagnostics portal.



OUTSTANDING PERFORMANCE. UNRIVALED RELIABILITY.

PACCAR MX *Powered By Quality*

The 12.9-liter PACCAR MX-13 and 10.8-liter PACCAR MX-11 engines are characterized by their combination of proven technologies and state-of-the-art innovations that improve fuel economy. Both engines employ a common rail system to maintain injection pressures of 2,500 bar, which helps achieve the lowest possible fuel consumption, emission and noise levels. Whether linehaul or vocational heavy-duty truck applications, PACCAR MX engines deliver exceptional reliability and proven performance.

PACCAR MX-13

HP	TORQUE (LB-FT)
405	1,450 / 1,550 / 1,650 / 1,750
430	1,550 / 1,750
455	1,550 / 1,650 / 1,750
485	1,650
510	1,850

TECHNICAL SPECIFICATIONS

Displacement – 12.9L
Bore x Stroke (mm) – 130x162
Governed Speed – 2,200 rpm
B10 Design Life – 1.0 M miles
Dry Weight – 2,600 lbs.
Oil System Capacity – 42 U.S. Quarts

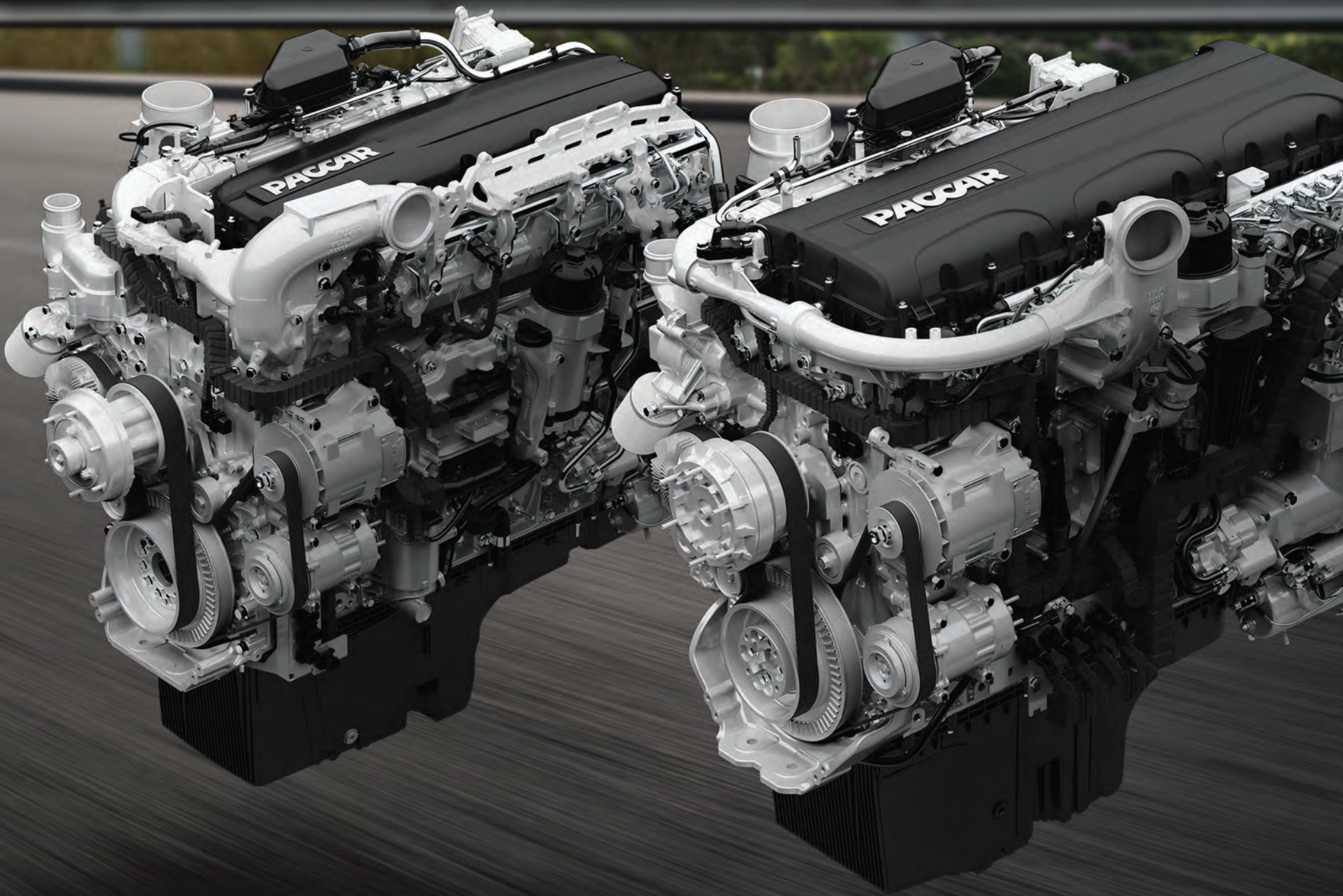
PACCAR MX-11

HP	TORQUE (LB-FT)
335	1,150
355	1,250
375	1,350
385	1,450
425	1,450
430	1,350 / 1,550 / 1,650 ¹

¹Multi Torque Rating

TECHNICAL SPECIFICATIONS

Displacement – 10.8L
Bore x Stroke (mm) – 123x152
Governed Speed – 2,200 rpm
B10 Design Life – 1.0 M miles
Dry Weight – 2,200 lbs.
Oil System Capacity – 39 U.S. Quarts



PACCAR POWERTRAIN

PACCAR TRANSMISSIONS

PACCAR's 12-speed automated transmission was designed from the ground up to work seamlessly with PACCAR MX engines and axles. The purpose-built automated transmission represents a major advancement in powertrain performance, productivity, efficiency, driveability and return on investment.

FEATURES

- Lightest 1,850 lb.-ft. torque-capable heavy-duty automated transmission system on the market
- Smooth and intuitive shift strategies to improve fuel economy and driver comfort
- Deepest reverse ratio among linehaul transmissions for slow-speed maneuvering
- Longest transmission oil change interval for linehaul applications
- Requires only half as much oil – 16 pints – as comparable automated transmissions
- Industry-exclusive Fluid Pressure Sensor notifies the driver of low oil to prevent gear burn-up

Gears	12 Forward / 2 Reverse
Lower Cruise Speed Limit	1,100 RPM
Torque Capacity	1,850 lb.-ft.
Oil Capacity	16 Pints
System Weight	657 lbs. (Transmission, Clutch & Oil)
Maximum Operating Weight	110,000 lb.
PTO Maximum Capacity	8 Bolt, Bottom Mount, 95 HP
Fluid Pressure Sensor	Protection from Gear Burn-up

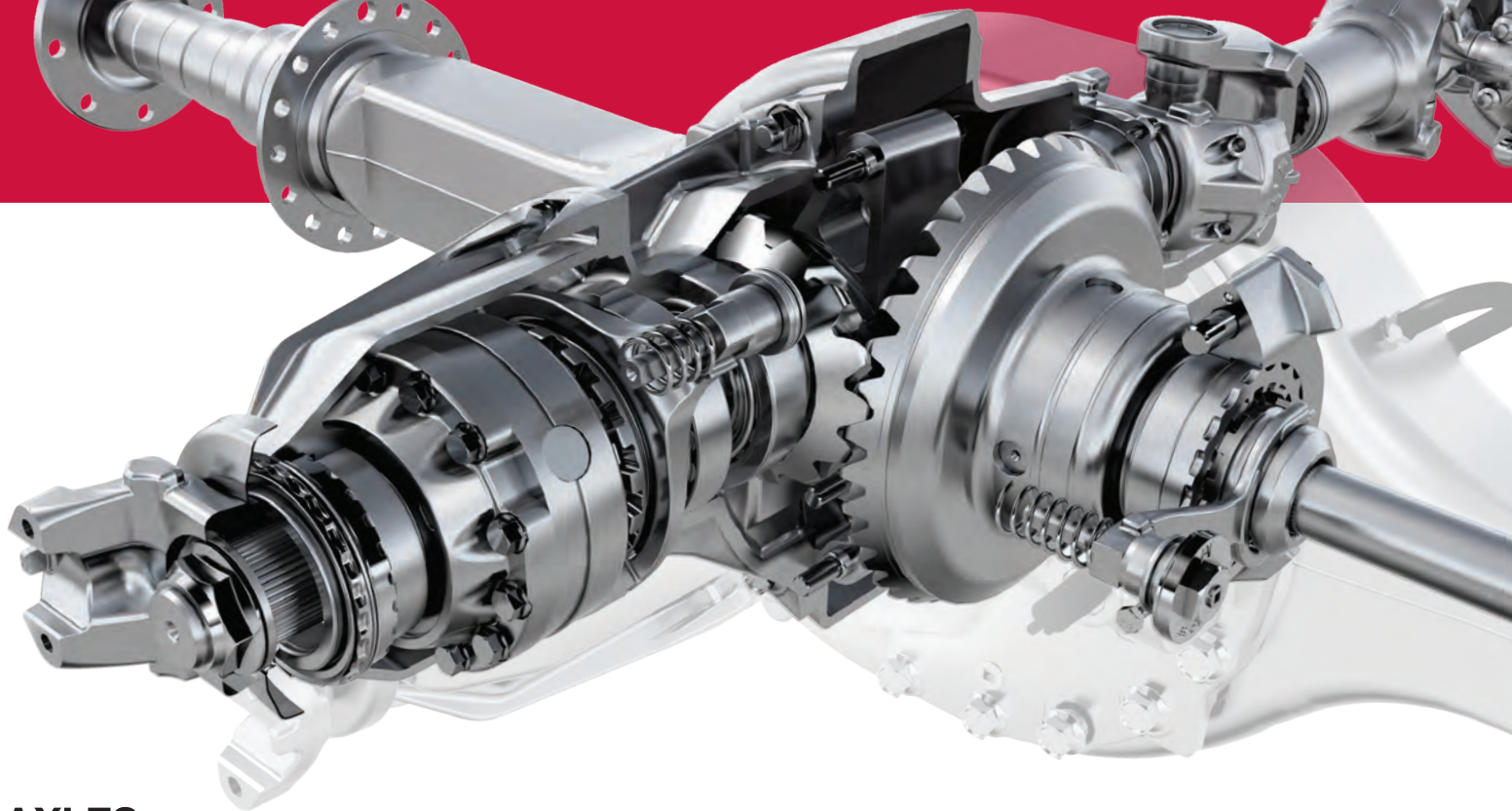
WARRANTY COVERAGE

Transmission	5 Years / 750,000 Miles
Clutch	3 Years / 350,000 Miles

MAINTENANCE INTERVALS

Transmission	750,000-Mile Oil Change
Clutch	Maintenance Free





PACCAR AXLES

The PACCAR 40K tandem axle is the industry's premier linehaul axle. Innovative technologies and advanced manufacturing processes deliver a fuel-efficient, lightweight design resulting in a lower cost of ownership. Created with fuel-conscious, linehaul customers in mind, the 40K tandem axle maximizes payloads. With a first-of-its-kind pinion thru-shaft design, it keeps loads moving forward efficiently and reliably.

FEATURES

- *Durable pinion thru-shaft design improves internal efficiencies*
- *Up to 1% fuel efficiency improvement*
- *High-efficiency pinion and differential bearings reduce power losses*
- *Advanced laser welding eliminates internal fasteners*
- *Up to 150 lbs. lighter*

GCW	80,000 lbs.
GAWR	40,000 lbs. Tandem
Ratio Range	2.47–3.70
Straight Torque Rating	1,650 lb.-ft.
Multi-Torque Rating	1,750 lb.-ft.
Warranty	5 Years / 750,000 Miles

PACCAR FINANCIAL

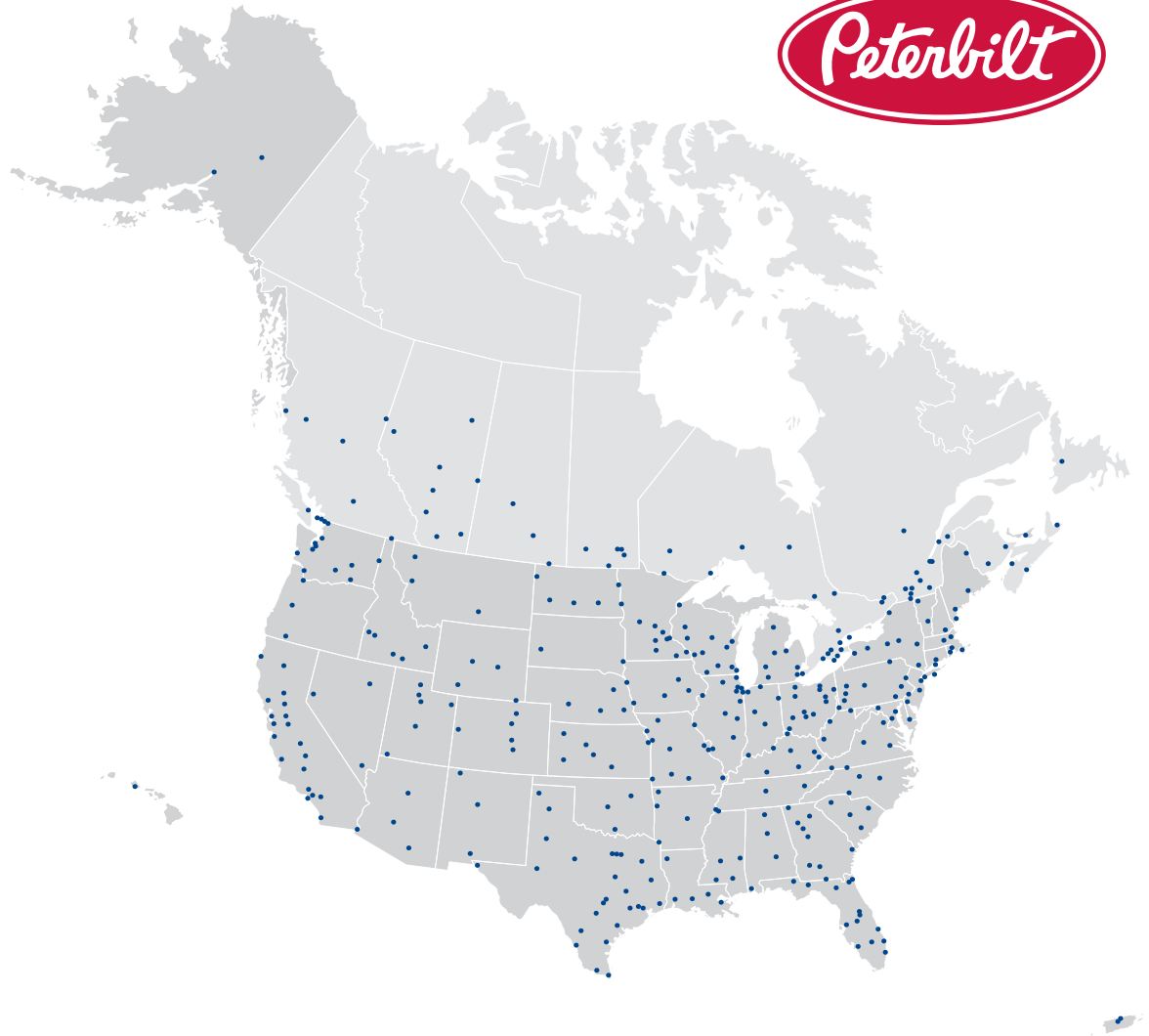
PACCAR Financial provides innovative finance and insurance tools for Peterbilt customers. Please see your Peterbilt dealer for information about customizing a financing package that suits your needs.



PacLease offers full-service leases, contract maintenance, logistics services, insurance, fuel tax reporting and other support services to Peterbilt customers.

PACCAR PARTS

Peterbilt customers can count on PACCAR Parts to supply Peterbilt Original Equipment parts and PACCAR Genuine Parts through the Peterbilt dealer network. Peterbilt and PACCAR Genuine Parts are designed to keep your Peterbilt operating with optimum performance and reliability. PACCAR Parts also support the Peterbilt dealer network with innovative products and services, including PACCAR Parts Fleet Services, Online Parts Counter and TRP Aftermarket Parts.



DEALER SUPPORT

Peterbilt's extensive dealer network means your truck is never far from Peterbilt parts, service and sales expertise.

Complimentary Customer Assistance

Call 1-800-4PETERBILT

peterbilt.com





CLASS PAYS

 facebook.com/PeterbiltMotors

Note: Equipment and specifications shown in this brochure are subject to change without notice. Consult with your Peterbilt dealer for standard and optional equipment.

PETE-9894 2/2019